

EMBASSY

Frances Aviva Blane

Frances Aviva Blane

**TWO FACES
PAINTING/heads**

27 July 2016 - 31 January 2017

GERMAN
EMBASSY.
34 Belgrave Square, London SW1 8QB



**In every painting there is always more to discover...
Her innovative use of paint compel one to look beyond
the surface.**

We have now lived with Frances Blane's paintings/drawings for 6 months and it has been an interesting and joyful experience for our many guests as well as for ourselves.

We find Frances Blane's work uplifting and energetic. In every painting there is always more to discover after first glance and even in the minimalistic paintings there is a complex and painterly structure which is rare in today's disposable work. Her innovative use of paint compels one to look beyond the surface.

It's been particularly interesting to have both her abstract pictures and figurative pieces on display. The heads are accessible and provide context for the more difficult and unsettling abstraction. We've enjoyed seeing both genres as it is rare for one artist to explore both. We particularly appreciate the minimalistic drawings and the use of different media. Her work is never boring.

These are not easy pieces. They do not seduce at first glance but open up an experience of visual investigation which is in turn disturbing yet sensual. Frances Blane has unusual vision and we believe in the integrity of this work.

Dr Peter Ammon and Marliese Heimann-Ammon

January 2017

FRANCES BLANE

Frances Blane's paintings and drawings are a continuing part of the great stream of Expressionist painting that emerged early in the 20th Century in Germany and across Europe, and there are even some that see it as having taken hold and transformed itself in America with the Abstract Expressionists. Painting, together with mathematics, agriculture and religion has been a means for us to measure and organise, to understand the world, but perhaps the Expressionist movement was attempting something a little different: to understand and communicate our own feelings and emotions about that world, through subjective, rather than objective means.

Frances Blane does this in a way that has sometimes been called Painterly Abstraction. Interestingly, there is only a narrow boundary between her abstract and her figurative works; the impact is very similar. Through marks and gesture and paint itself she finds equivalents on the canvas to her own turbulent nature. Sometimes these marks carry a definable meaning, and at others she discovers the meaning through the mark as it emerges from the brush. This is painting straight from the heart to the canvas. It convinces us because nothing is arbitrary or false. Her paintings are what she is, and the content can be expressed no other way. They are not there to be understood, but to be experienced. And their power, and at times even fierceness, on occasion threatening and even verging on the point of violence, has a totally believable presence.

Tess Jaray RA

January 2017



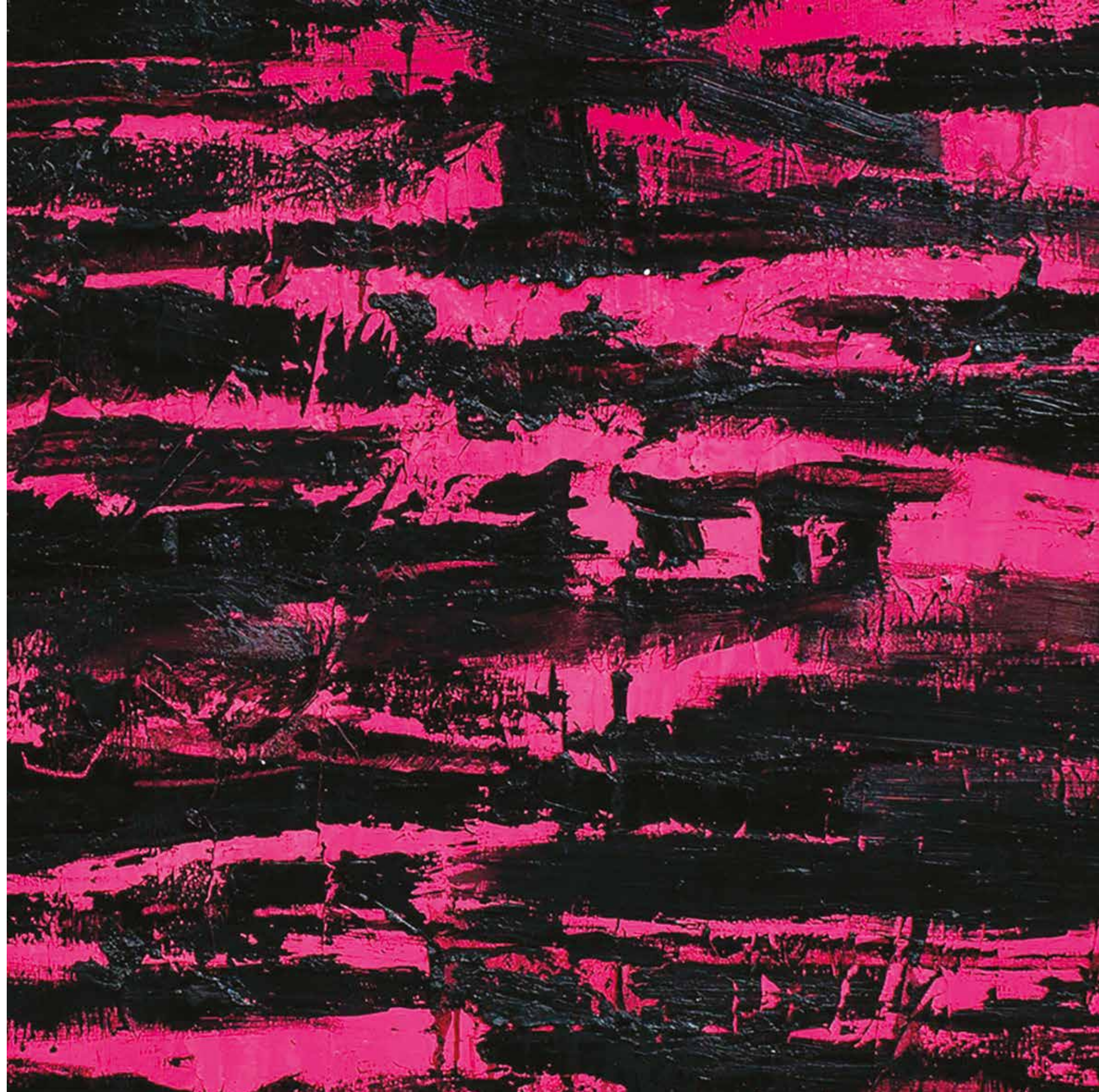
EXHIBITION

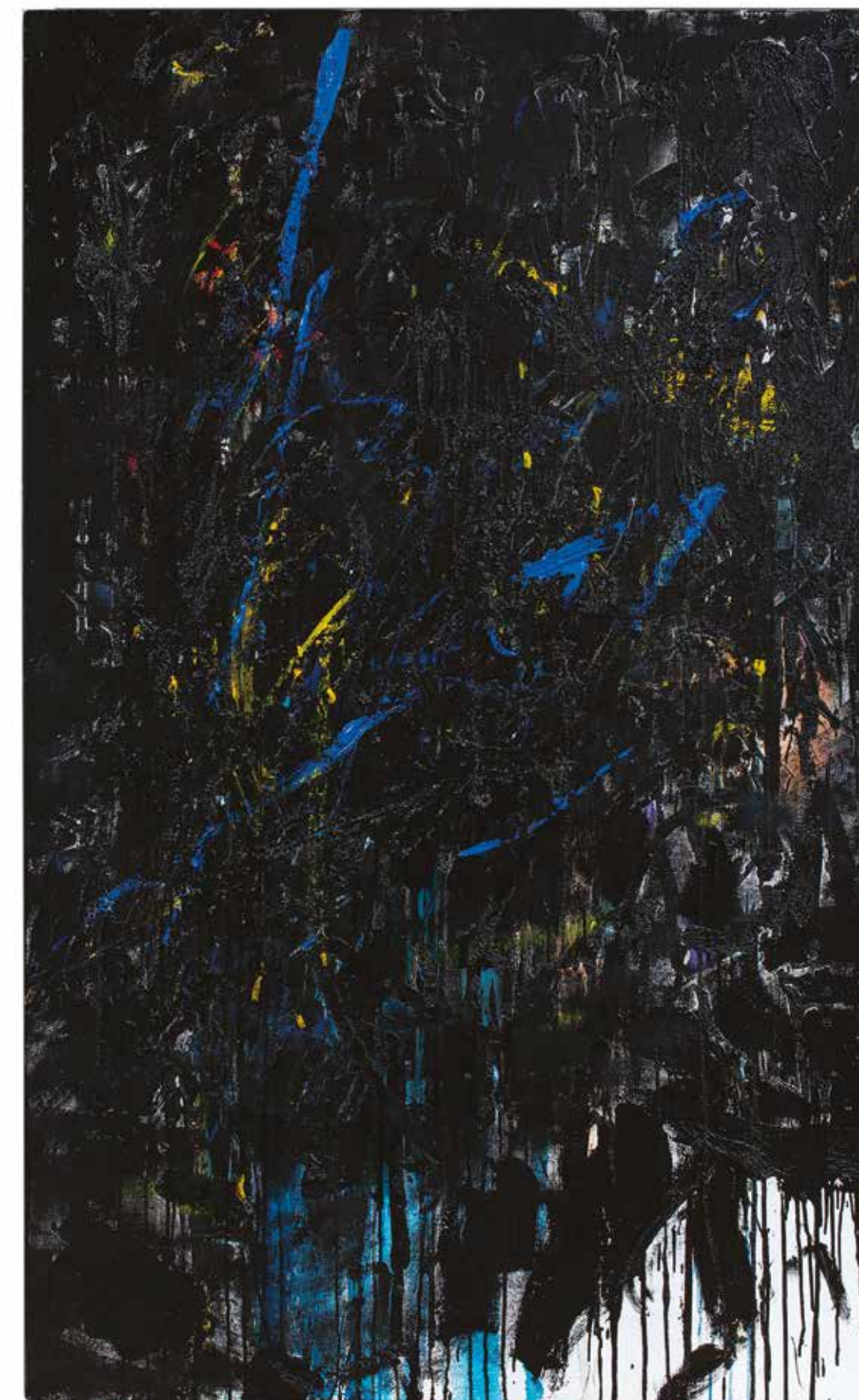


Accident
Oil/linen, 198x198 cms

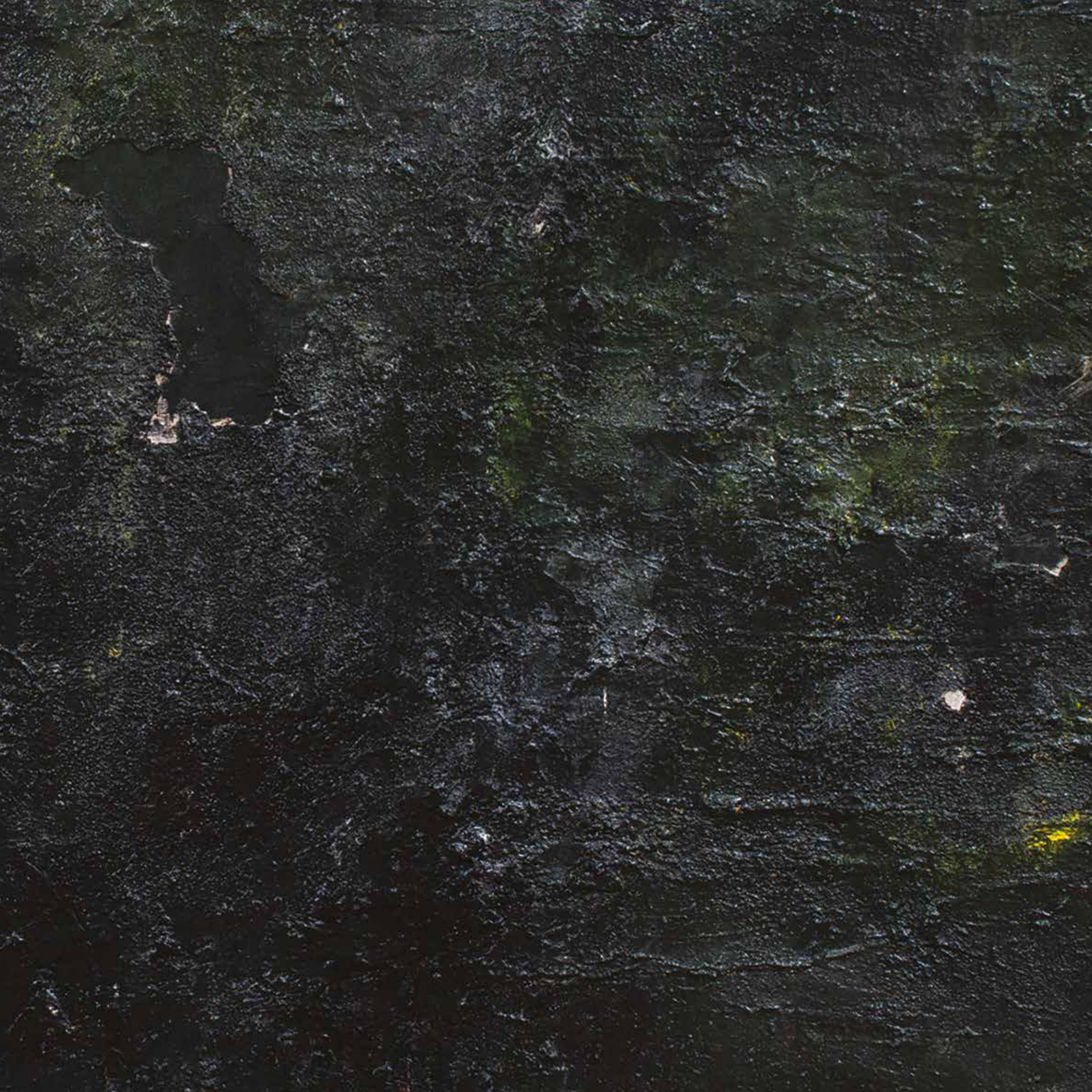


Summer
Oil/linen, 198 x 198 cms





Black on Blue
Oil/linen, 198 x 154 cms



Black
Oil/linen, 173 x 173 cms



Derail
Oil/linen, 198 x 198 cms

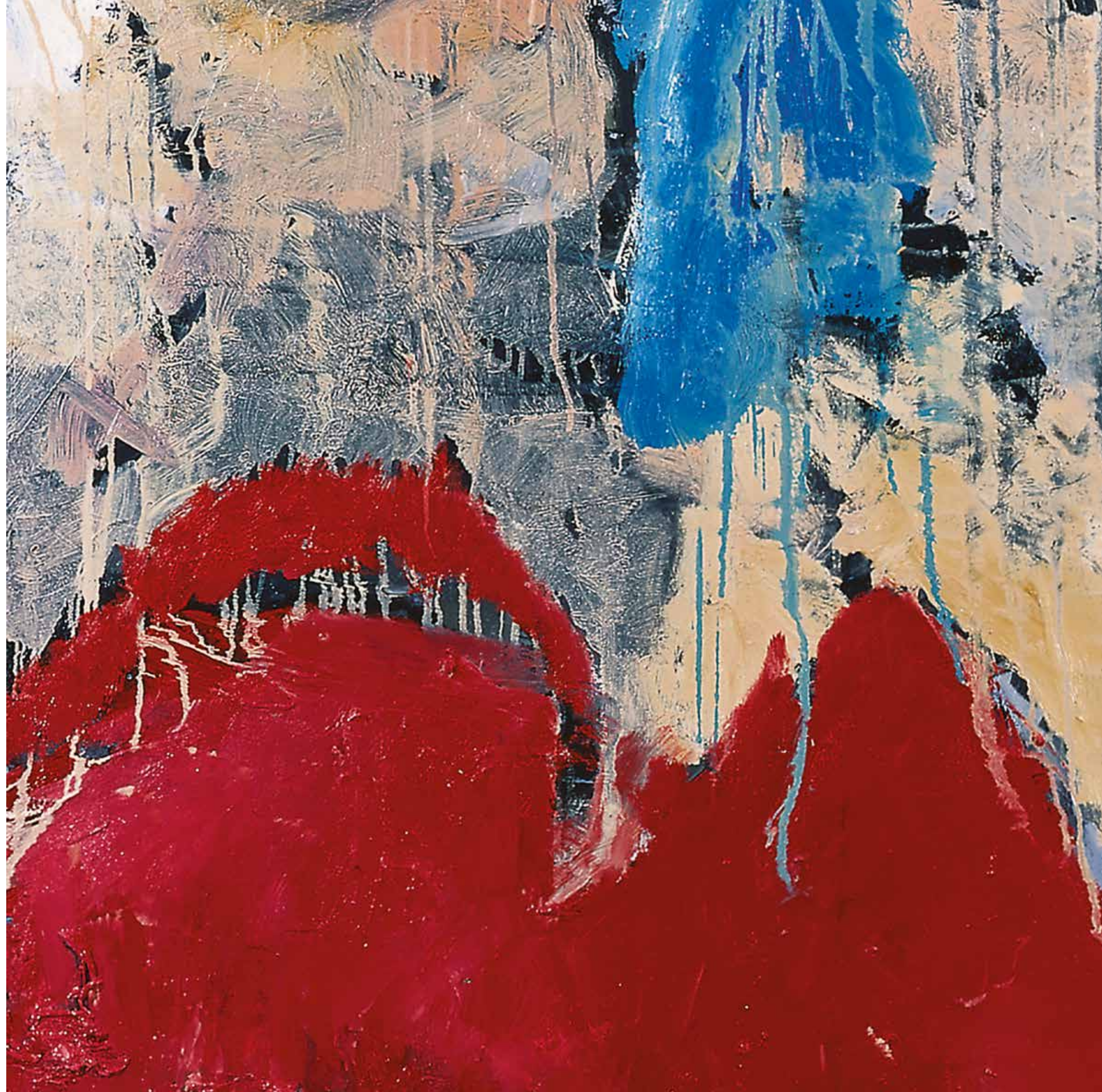




Wired
Oil/linen, 172 x 172 cms



Melt
Oil/linen, 173 x 173 cms

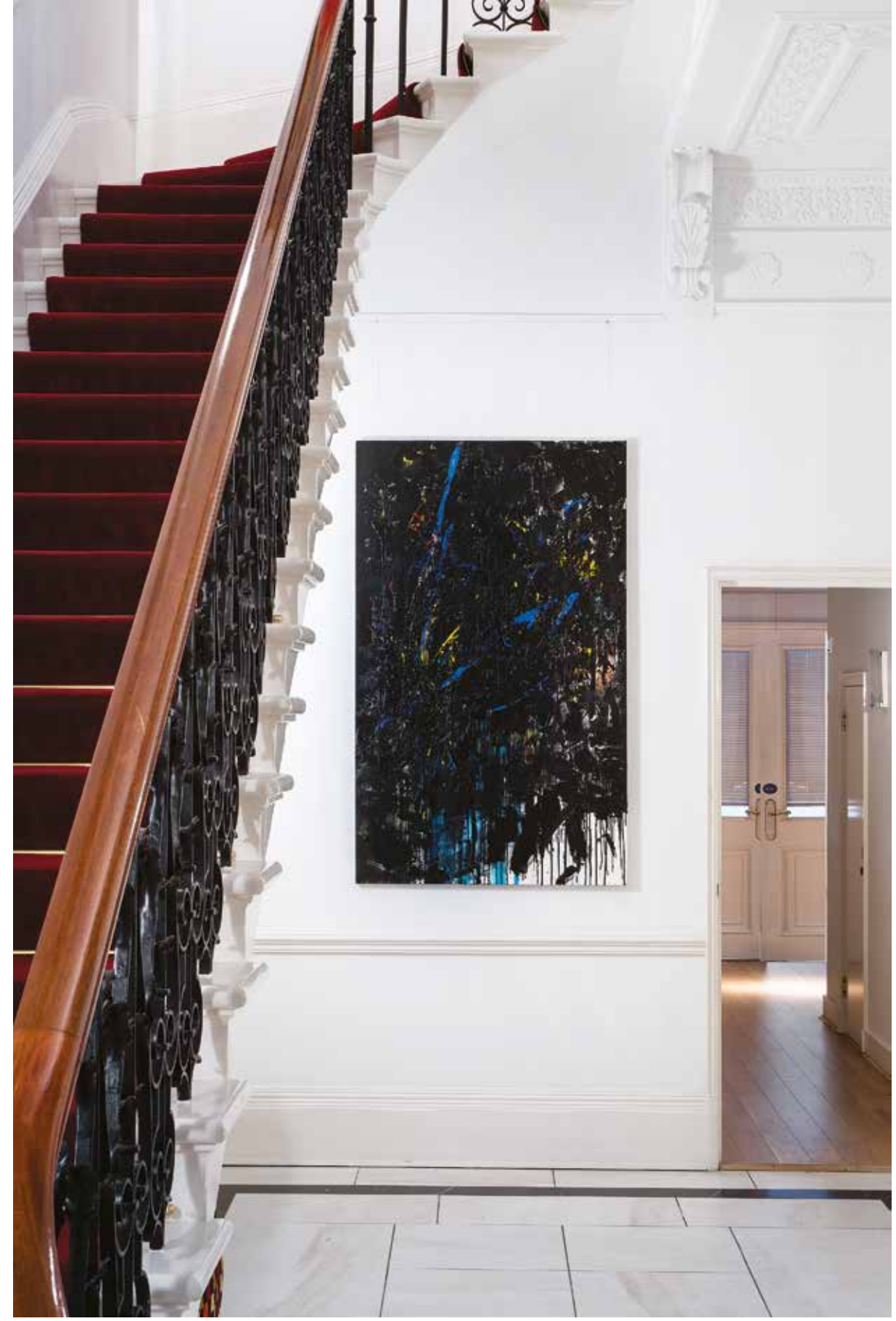
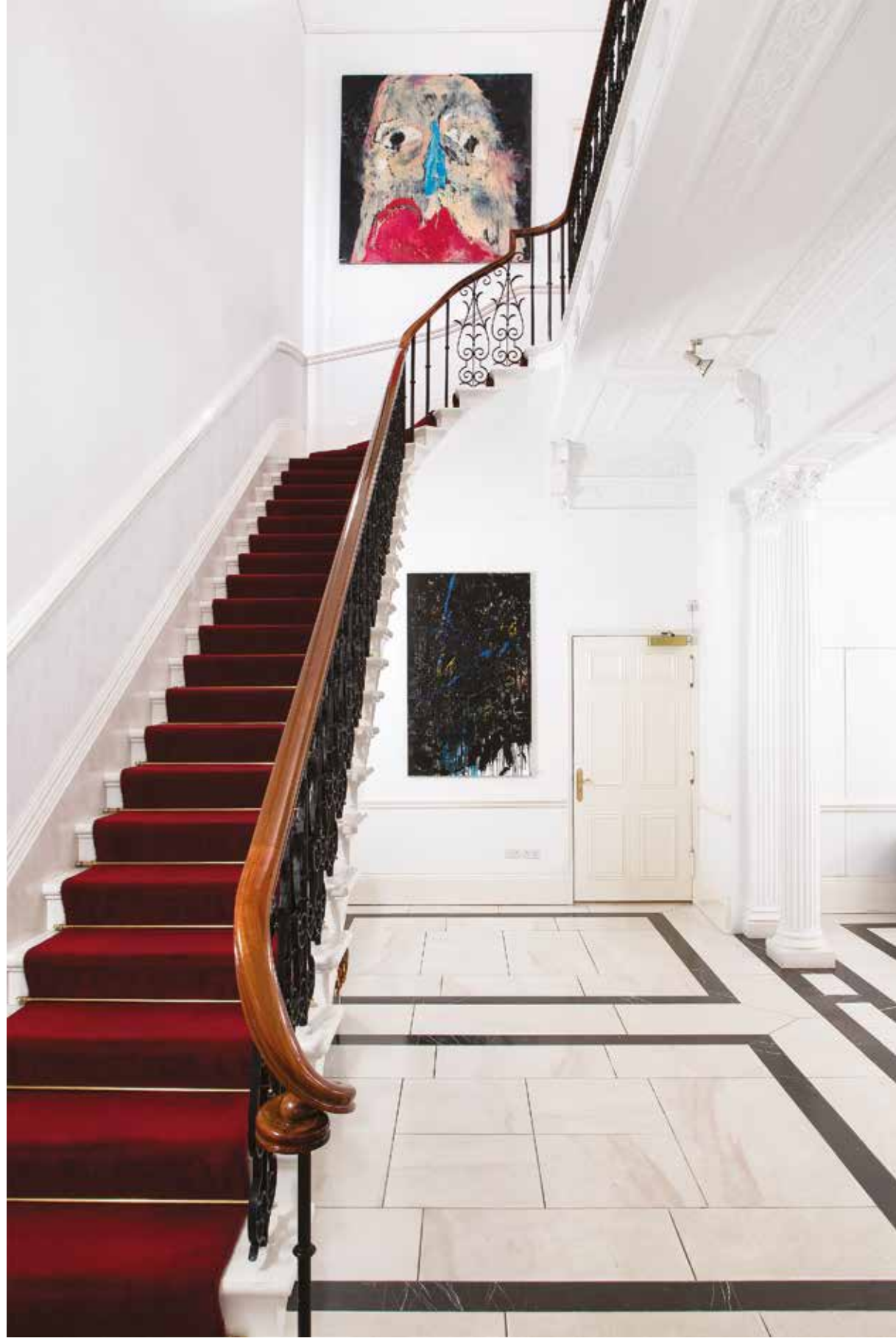


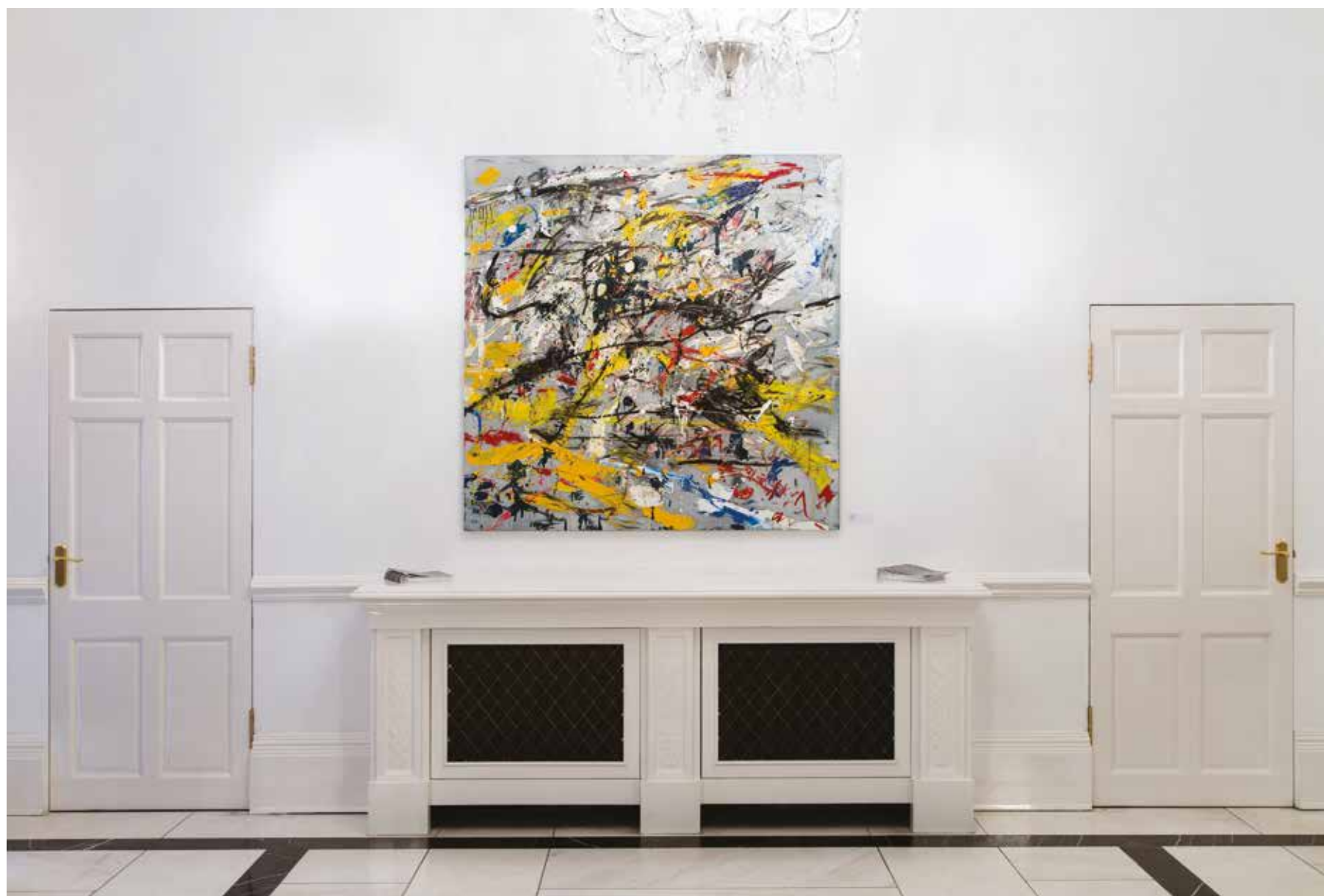


INSTALLATION







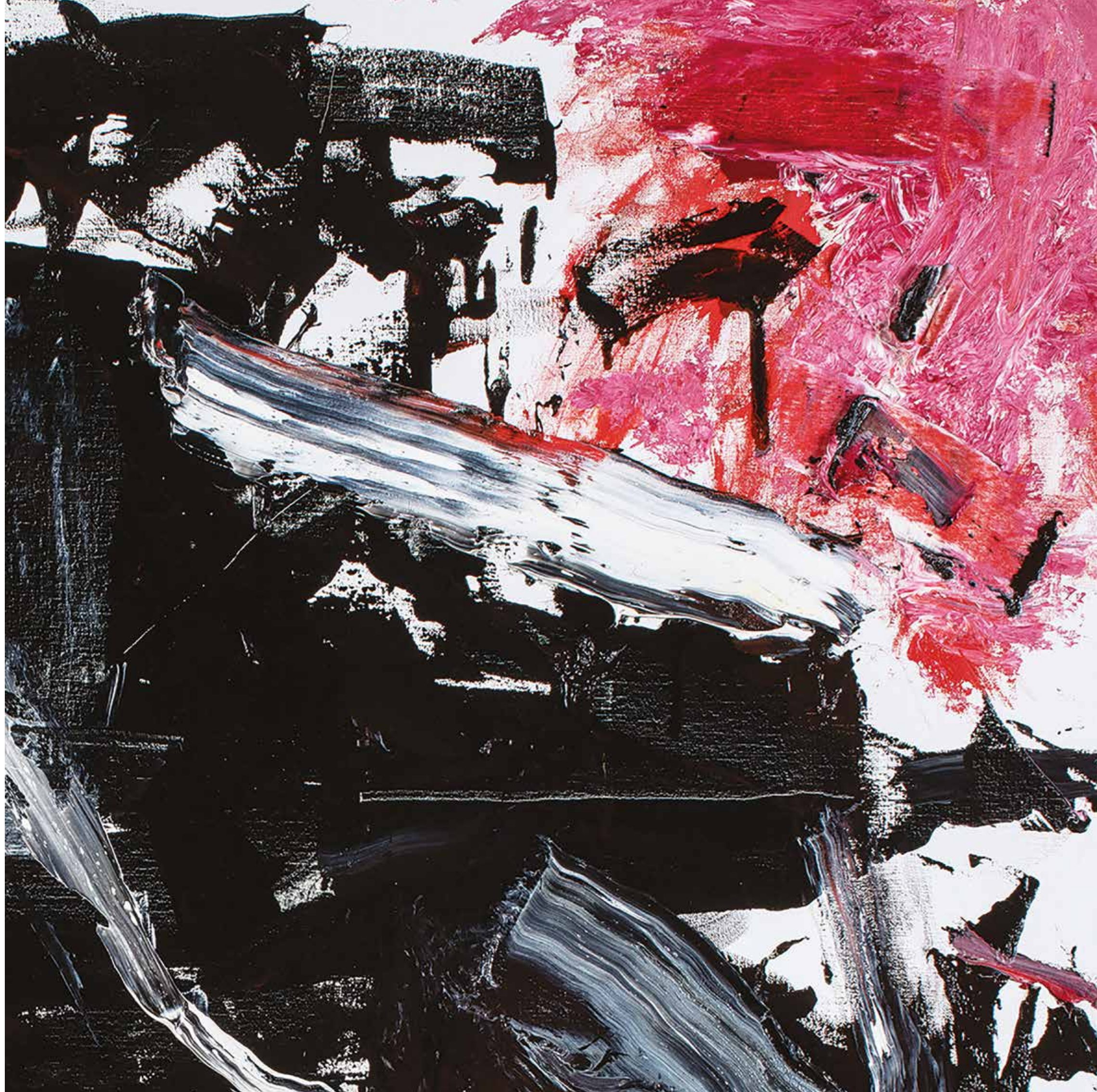




PLUS



Black on Pink
Oil/linen, 90 x 90 cms





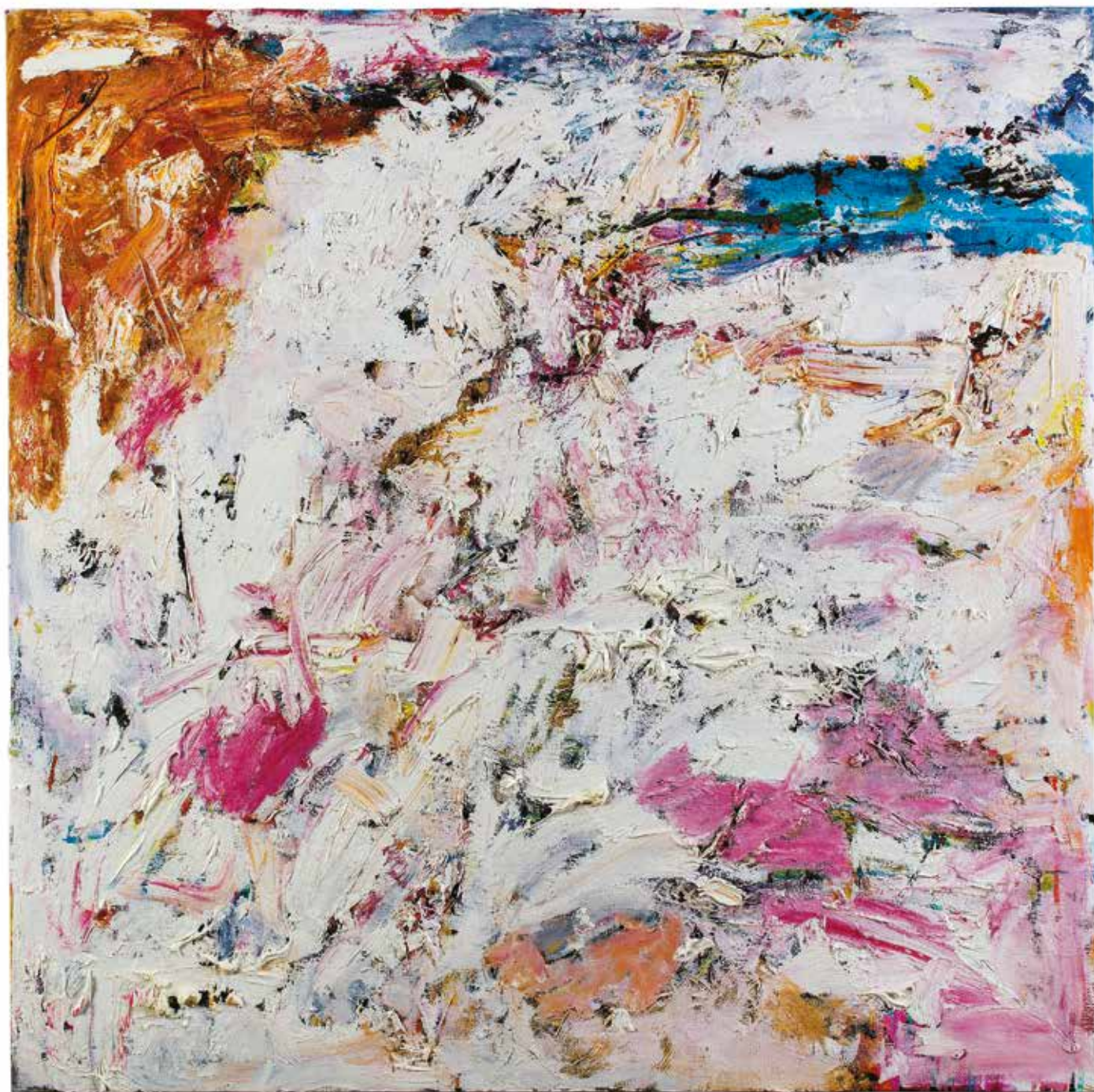
BOX
Oil/linen, 198 x 198 cms



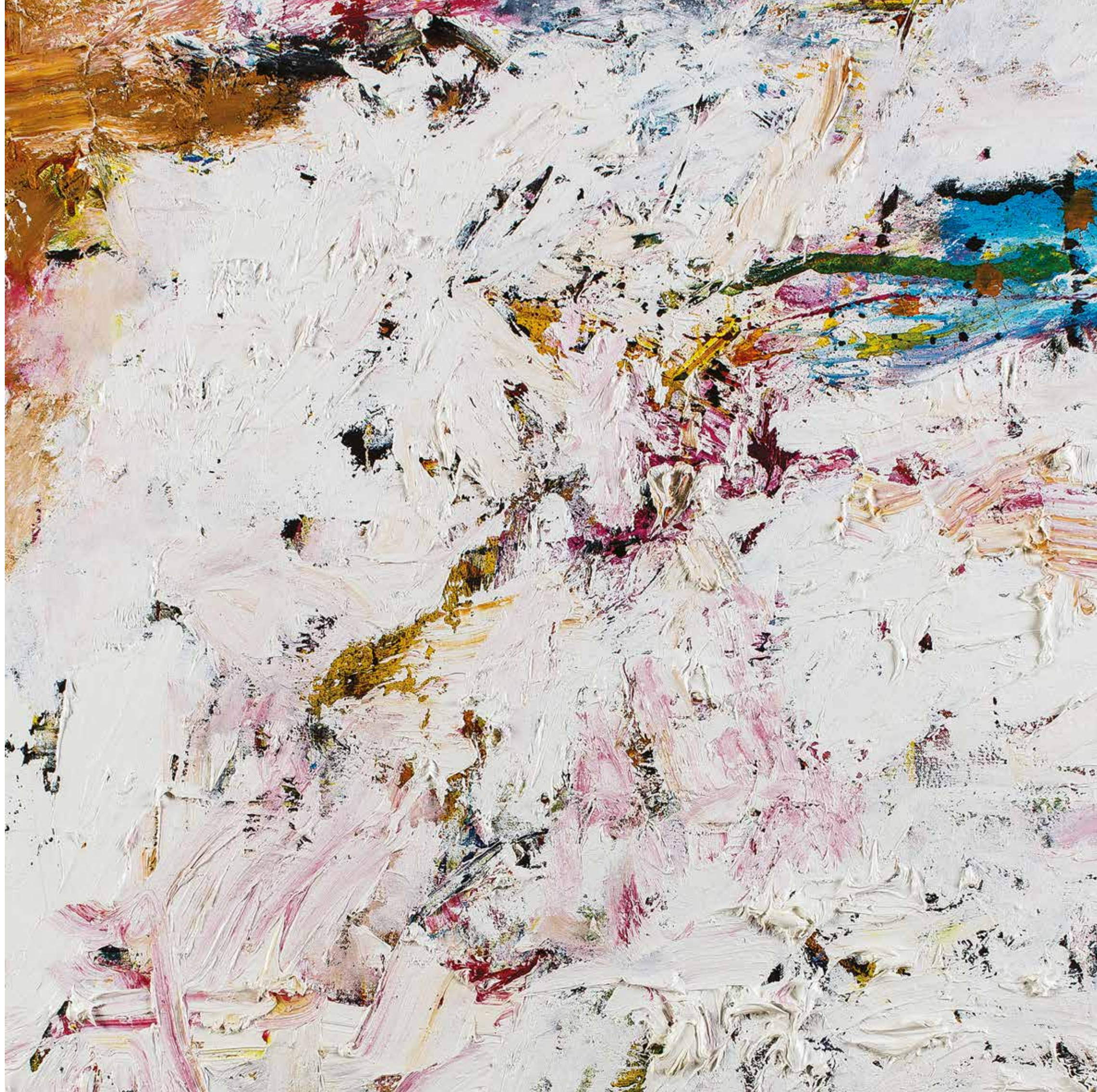
Fail
Oil/linen, 90 x 90 cms

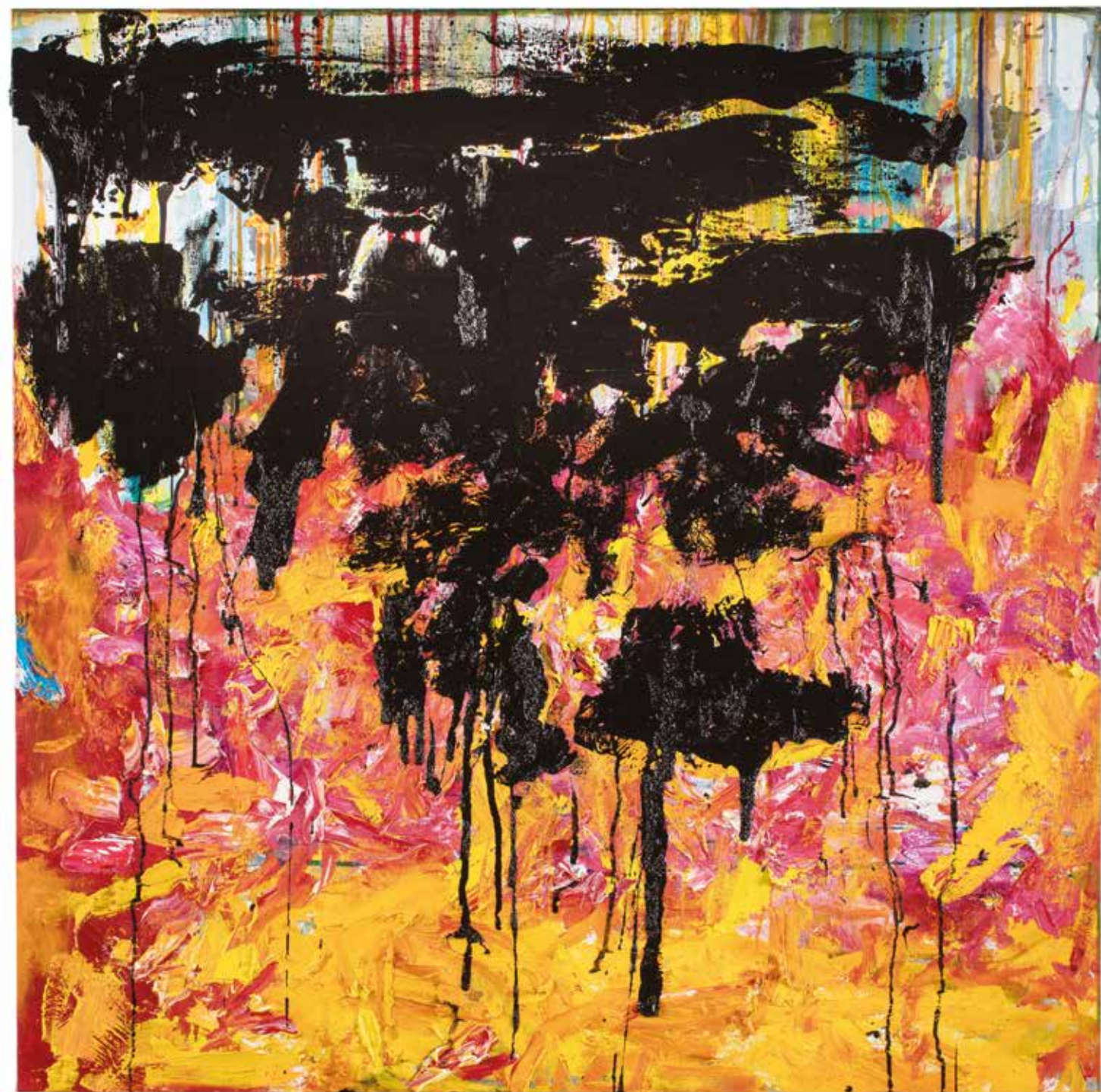


Map
Acrylic/charcoal/Fabriano 47 x 47 cms



Country
Oil/linen, 90 x 90 cms





Black on Yellow
Oil/linen, 90 x 90 cms



Heart
Oil/linen, 60 x 60 cms

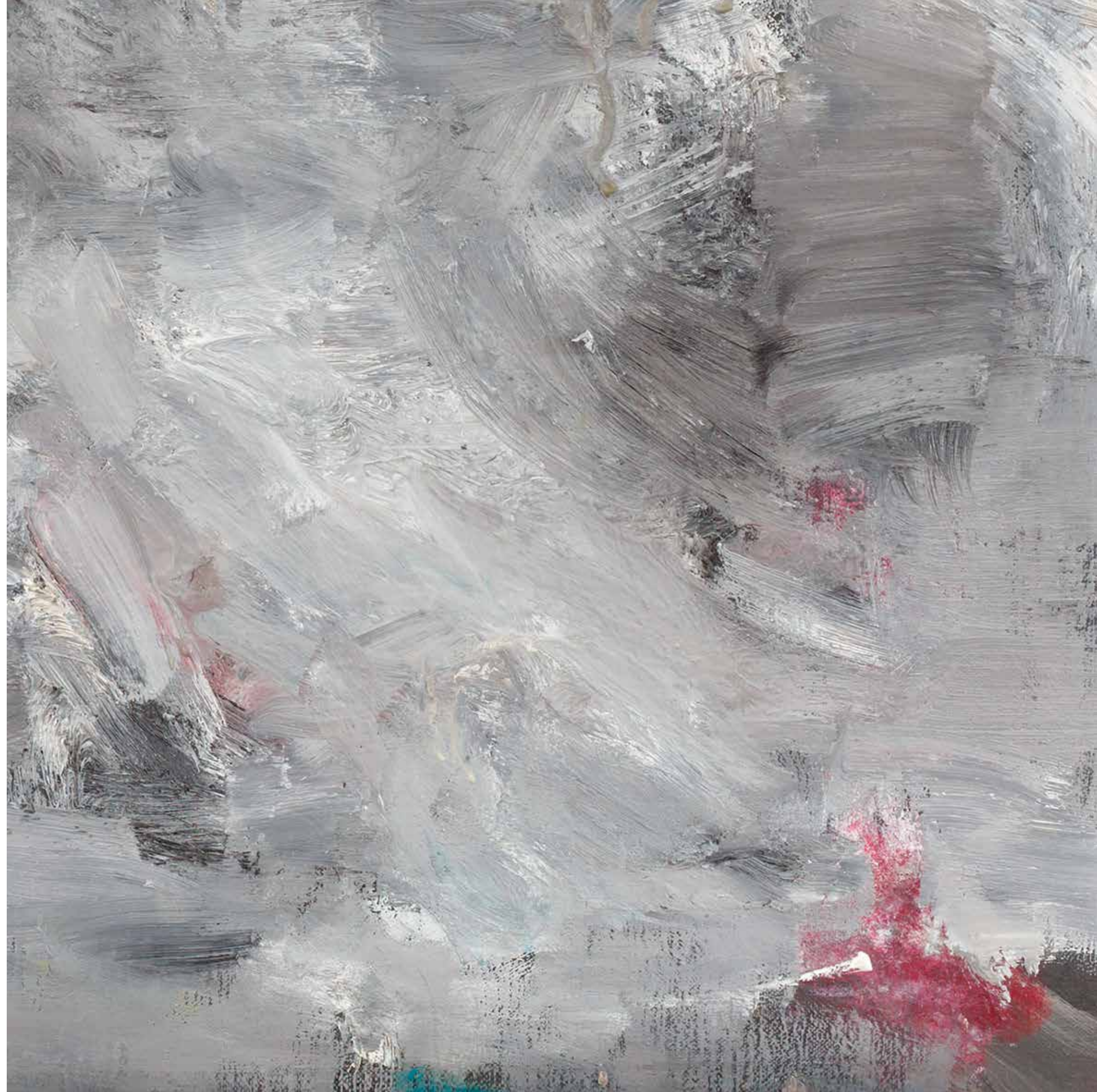




Sky
Oil/linen, 60 x 60 cms



East
Oil/linen, 60 x 60 cms





Choir
Charcoal/Fabriano, 47 x 47 cms



Himmler Court
Acrylic/Charcoal/Khadi, 47 x 47 cms

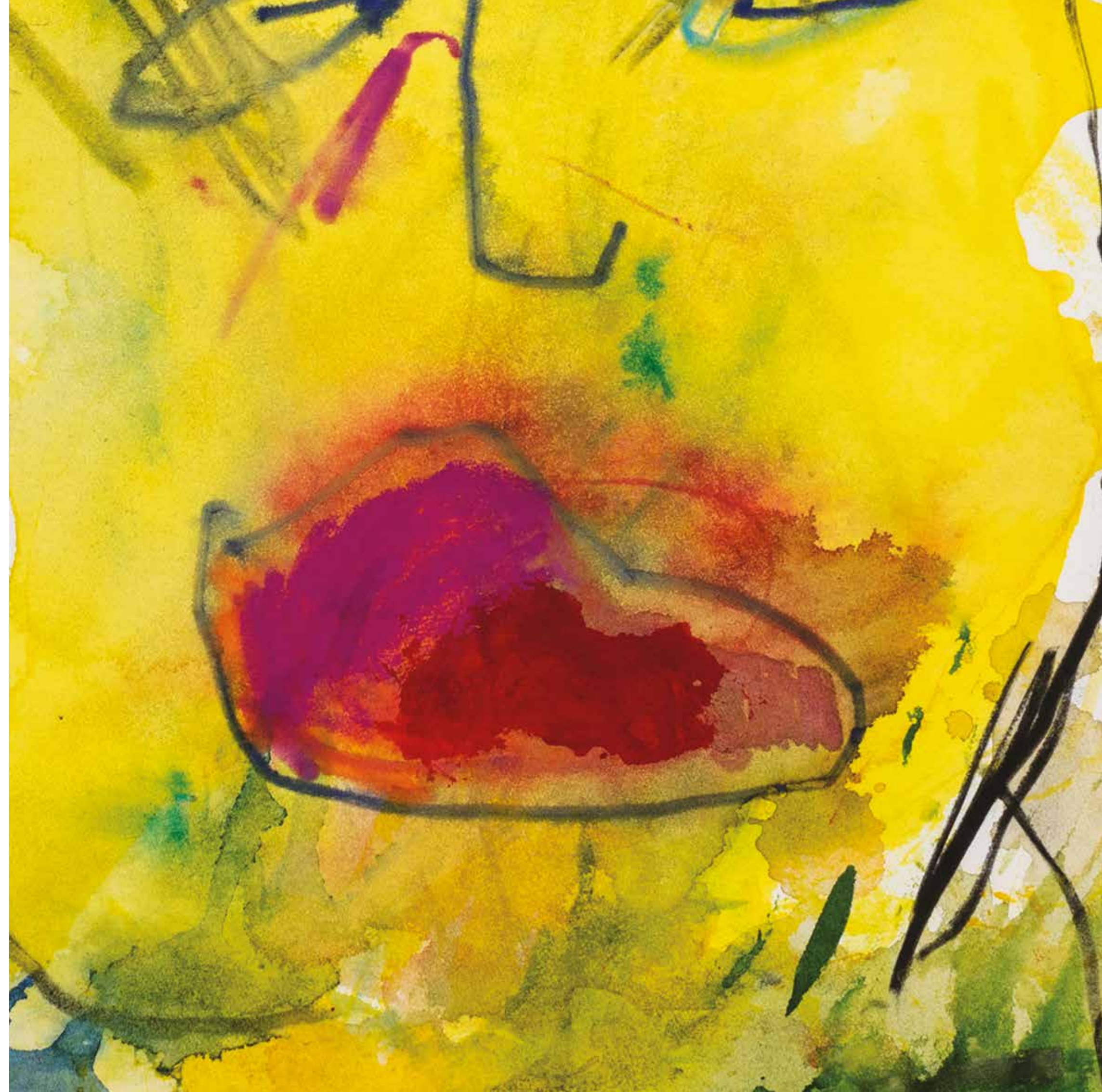




February
Oil/linen, 60 x 60 cms



Yellow Head
Acrylic/Charcoal/Waterford, 61 x 48 cms



Frances Aviva Blane

Art School Education

Slade School of Fine Art, UCL (University College London), 1991 – 1993
Byam Shaw School of Painting and Drawing, London, 1988 – 1991
Chelsea College of Art, London, 1987

Awards

Jerwood Award for Drawing, 1999
Cheltenham and Gloucester, Open Drawing Show (award winner) 1999
Mid-America ART Alliance Fellowship for Visual Arts, 1998
Residency at Djerassi Artists’ Foundation, California, 1998
Graham Hamilton Drawing Prize, 1991

Collections

Her work is in many collections including: Blind Art, London Jesus College, Cambridge
The London School of Economics, Moorfields Eye Hospital, London
The Sternberg Centre, London The Usher Gallery, Lincoln
The Three Faiths Forum, London
The Tim Sayer Collection London
The Doris Jean Lockhart Collection

Recent Publication

NOTHING.

Paintings and Works on Paper 2015
essay by Diana Souhami

Selected solo shows

TWO FACES. Painting/HEADS , The German Embassy Belgravia, London 2016 – 2017
DECONSTRUCT solo show alongside exhibitions of Louise Bourgeois and Francis Bacon.
De Queeste Kunstkamers, Abele/Watou, Belgium, 2014
BIG BLACK PAINTINGS , Bay Hall, Kings College, London, 2014

Selected group shows

Liquid Thought, with Daniel Enkaoua and Chris Stevens,
De Queeste Kunstkamers Abele/Watou Belgium, 2016
Impact, with Marthe Zinc, Louise Bourgeois, Mark Anstee,
De Queeste Kunstkamers Abele/Watou Belgium, 2016
De Vage Grens, with Frank Auerbach, Reniere & Depla,
De Queeste Kunstkamers, Abele/Watou, Belgium, 2015
JerwoodDrawing Prize London and tour 2015
Drawing Breath, Jerwood Anniversary Exhibition, Award Winners ,
London, Sydney, Bristol, 2006 – 2008
Annely Juda, a Celebration, Annely Juda Fine Art, London, 2007
German and English Painting, Berlin–London Gallery Swap,
sponsored by the British Council and Goethe institut, 2002
Drawing with Basil Beattie, ecArtspace, London, 2001
Painting with John McLean, ecArtspace, London, 2000

Frances Blane is represented in Belgium by De Queeste Art Gallery
Abele/Watou. Belgium



Frances Aviva Blane

for more information on Frances visit: www.avivablane.com

Frances would like to thank

Marliese Heimann-Ammon

Dr Peter Ammon

German Ambassador to the Court of St James

Tess Jaray RA

Photography

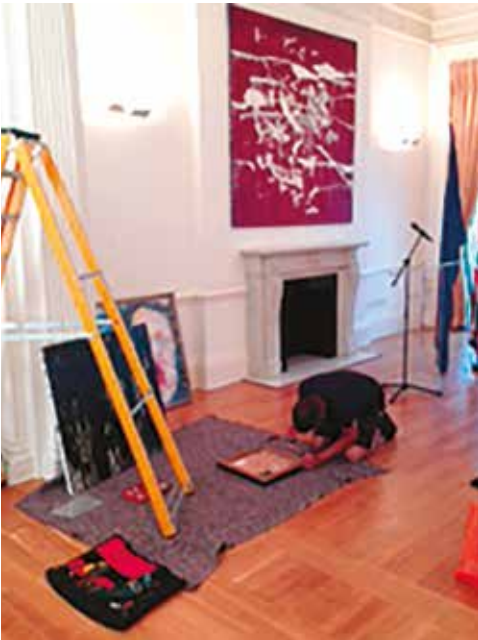
Richard Ivey

Lucid Plane

Sarah Wedderburn

Design and Print

The Paper Boat



All images © Frances Aviva Blane

No image may be reproduced in any way; photographs may not be copied, transmitted, published, reproduced, stored, manipulated or altered in any way without the express permission in writing from Frances Aviva Blane.



www.avivablane.com

Published by Starmount Publishing





Published by Starmount Publishing
All works by Artist and Author
Frances Aviva Blane
all images © Frances Aviva Blane.

www.avivablane.com